

## *Glasgow Studio 1 Refurbished*

Glasgow Studio 1 returned to full service in December after refurbishment, coinciding with the 50th anniversary of the Scottish Symphony Orchestra. The studio boasts a new control room, solo instrument annex and improved acoustic treatment. Part of the refurbishment included the restoration of the audience lobby, which was restored to its pre-war elegance.



Studio 1 entered service in November 1938, being an addition to the Queen Margaret Building formerly a medical college which produced the first female doctor. Apart from updating the control desk and associated audio processing equipment, nothing has been done to the fabric of the studio since then. Used mainly for orchestral and audience shows, the main change as a result of this refurbishment was the removal of the choir rostrum and restoration of the wooden floor. Gone is the old wooden wall panelling which was designed "to give the best conditions for the type of programme" (Engineering Information No 7, September 1938). In its place, modern panelling has been installed to the same

criteria, and the previously satisfactory acoustics, have been preserved with little noticeable difference.

To accommodate the new mixing desk, it was necessary to build a new control cubicle. With no space available in BH, a three-storey extension to the studio was built to house new air-conditioning plant, an instrument store, a recording channel and the control cubicle.

In keeping with other music studios, the control cubicle has been equipped with a 48 channel Solid State Logic SL4000E multitrack desk, though not yet provided with its automation computer. Three Studer A80 twin-track tape machines and a gram deck have been installed, along with a Lyrec multitrack tape machine with remote control, previously housed in an OB vehicle. The control cubicle is also equipped with AMS RMX16 and EMT.244 digital reverberation units and an AMS DMX15-80/S along with Lexicon PCM41 digital delay units. Quality audio monitoring is via LS5/8's and provision has been made for studio visual monitoring using a Sony CCTV system.



*The restored audience lobby at Queen Margaret Building, Glasgow*

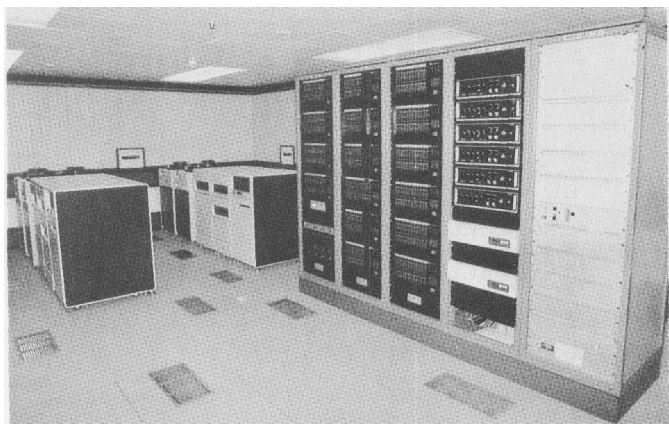
## MSS Into Full Service

The BBC's new message switching system (MSS) was put into service on November 3rd, 1985. This replaces the old ADX system which had been in service from 1970. Since March 1984, however, a temporary installation had been in use after the failure of the ADX hardware, and pending completion of the software for the final MSS system.

The MSS provides a store and forwarding service for textual messages between any terminals connected to it. Simple address-codes added to the top of messages instruct the MSS as to where they should be sent. The MSS is used for many different purposes. News items are distributed this way to newsrooms and local radio stations, booking schedules are sent to control-rooms and transmitter fault reports from MICs are sent to studio centres. In addition, the Telex connections enable messages to be exchanged with UK and overseas organisations for such things as travel, shipping of goods, and orders for equipment.

The computers which support the MSS are located in the lower-ground floor of Broadcasting House. They consist of six DEC PDP 11/44s, each equipped with 1 megabyte of memory, dual 67 megabyte exchangeable disc-drives, and multiple input and output interfaces. The processors are interconnected via a high speed bus, so that as far as the user is concerned the system behaves as if it were a single computer.

The computer room is situated on the



General View of MSS computer room

opposite side of the building from the Central Telecommunications Area (ATA), whence data-circuits to the MSS users within the BBC are distributed. Connections between these two areas is made using individual limited-distance modems for each circuit. At present there are about 400 of these, although the present capacity of the MSS is 312 two-way lines. Sufficient space has been allowed in the

continued on page 12

## Transmitters Opened

The following transmitters have opened or changed since October:-

### Uhf Television

Austwick	N Yorks
Cefn-Mawr	Clwyd
Trefechan	Mid Glamorgan
Broughton	Borders
Aveton Gifford	Devon
Dunsford	Devon
Hope-under-Dinmore	Hereford & Worcs
Winshill	Staffs
Falstone	Northumberland
Ferryside	Dyfed
Middleton	Gtr Manchester
Brailes	Warwicks
Muldonagh	Co Londonderry
Claudy	Co Londonderry
Hammersmith	London, W6
Llangurig	Powys
Elton	Cheshire
Sutton Coldfield	new uhf aerial
Black Hill	new uhf aerial
Mynydd Emroch	extended coverage
Caterham	extended coverage
Blaenau Gwent	extended coverage

### Vhf radio

Llanddona	Stereo
Llangollen	Stereo

### Local Radio Frequency Changes

Radio Kent	Swingate
Radio Sussex	Heathfield
Radio Sussex	Reigate
R York	Acklam Wold

### MF : New Transmitters

Radio Wales.	Forden
--------------	--------