

**ENGIN**

**INF**

RGS

The quarterly for BBC engineering, technical and operational staff

**SPRING 1991**

**No. 44**

# THE NEW NETWORK ID ENTITIES

The new Network Identities for BBC 1 and BBC2 were launched on 16th February.

The clocks are generated digitally by new D&ED equipment while the moving sequences (symbols) are stored on special laser videodiscs. The BBC 1 symbol is again based on the familiar rotating globe but the BBC2

symbols are individual sequences lasting up to a minute each.

Each symbol can be augmented with text to identify the region and to indicate if Ceefax subtitles or Nicam stereo sound (in the future) is being transmitted.

The equipment used to generate and store the new Identities is described on pages 27 and 28.

## CONTENTS

DAB	
- The story so far	4
EID	
- Moves to White City	22
FAMILY TREES	
- D&ED and RD	3
NETWORK IDENTITIES	27
NETWORK TELEVISION	
- Sypher I reopens	26
- TCI reopens	14
RDS	
- Traffic Message Channel	23
RESEARCH DEPARTMENT	
- The Marriage of Figaro	18
SAFET~	
- To withdraw or not!	2
TRANSMISSION	
- Containerised FM systems	9
- New FM control system	9
TRANSMITTER NEWS	2
WORLD SERVICE	
- Broadcast Coverage Dept.	II
- New Control Room	19



H. Pres. Tel.

The new BBC2 network clock

# ENGINEERING

Edited; designed and typeset by  
EID, Room 4616, White City  
Tel: White City (07) 24316

\*: \*: \*: \*: \*

You'll see from the address above that EID is now based at White City.

We made the move in early April - some six months ahead of schedule. Our floor in HWH was urgently required by Radio Drama, whose existing accommodation in Broadcasting House is now due to be revamped under the "Top Deck Project". So apologies if *Eng Inf* is somewhat late this time round.

Contributions for the Summer issue (No 45) should be sent to me - at the new address - by Friday 24th May. However, it would be a great help if you could let me know your plans well in advance, so that I can advise you on the amount of space available for your story.

Farwell II Oxford Street, Tottenham Court Road et al - it's been a great delight working in this area over the years.

Mike Meyer  
3 April 1991

## IEE AWARD

Our congratulations go to Peter Sarginson - a young RD Engineer - who was awarded second prize at an IEE Short Papers evening in mid February. The event was organised for younger members of the IEE's Surrey Centre.

Peter's presentation was entitled *VCR programming made simple* and his prize was £50 plus a certificate.

# SAFETY

## To withdraw or not!

In a domestic environment, should you leave it in at night or, for safety reasons, should you withdraw it? Safety Services Engineering is often asked this question about the mains plug on electrical equipment.

Firstly, switching off at the equipment itself is *not* adequate, because the switch on some equipment leaves parts of it powered up - with a potential risk of fire.

Our standard reply therefore is that electrical equipment must be isolated when not in use, and unplugging is a good way of doing this. However, an acceptable alternative is to switch off at

the wall socket, if that is possible. This method also has the advantage of reducing the mechanical wear on both the plug and the socket.

Finally, although this is not strictly a safety matter, switches which are combined with volume controls tend not to be so reliable; also, the volume control wears out more quickly. In this case, it may be preferable to simply switch off at the wall (or unplug the equipment, if there is no wall switch) without switching off at the equipment.

David Davis  
M.S.S. Eng.

# TRANSMITTER NEWS

The following services opened or changed between 15th December, 1990, and 28th March:

### TV relays

Finchley	North London
Hamstead	Birmingham
Lewes	East Sussex
Ystumtuen	Dyfed

The Brighton Central relay, which opened on 14th December, was modified on 31st January to provide a service towards the south for the first time (but at reduced power). This followed an agreement reached with the French authorities, after prolonged discussions. Transmissions to the south will step up to full power later in the year.

### FM stations

Chalford	Gloucs
Grantham	Lines
Westwood	Wilts
Weymouth	Dorset

### Radio 1 on FM

Bow Brickhill	Bucks
Llanddona	Anglesey
Peterborough	Cambs
Whitehawk Hill	Brighton

### Radio 4 on FM

Forfar	Tayside
Llanddona	Anglesey

### Local Radio

A new FM transmitter for Radio Suffolk opened at Lowestoft in late January and, on 11th March, Radio Leicester's FM transmitter at Copt Oak stepped up to power. Copt Oak now replaces the Anstey Lane transmitter, which will shut down on 3rd May.

## CORRECTION

Graham Whitehead of D&ED rang to say that a small error had crept in to his feature on Loudspeakers in our previous issue.

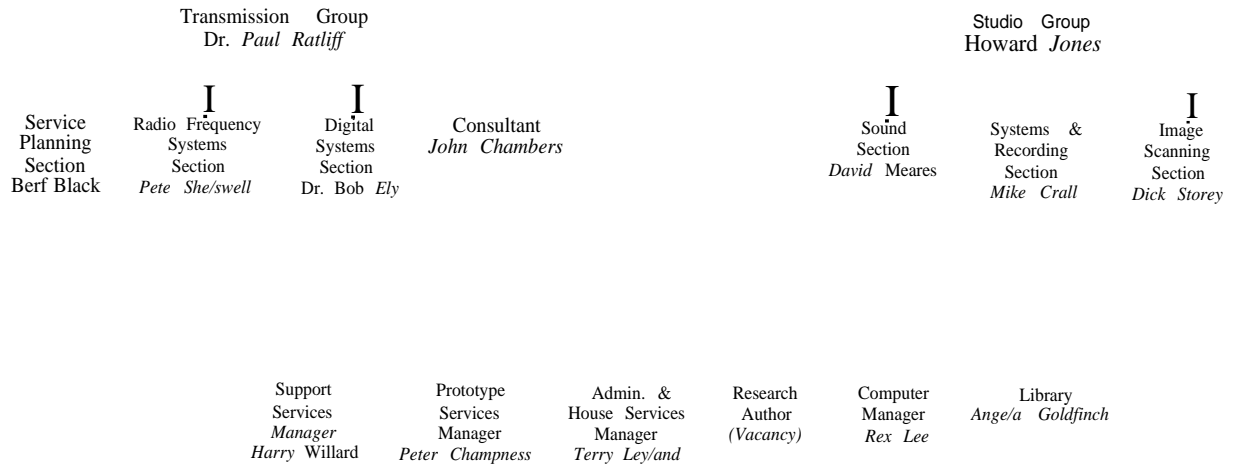
Under the heading *Yesterday's monitors* on page 7, the LS3/7 should have a Spendor 12-inch Bextrene cone woofer (LS2/1), and not an 8-inch unit as stated.

# FAMILY TREES

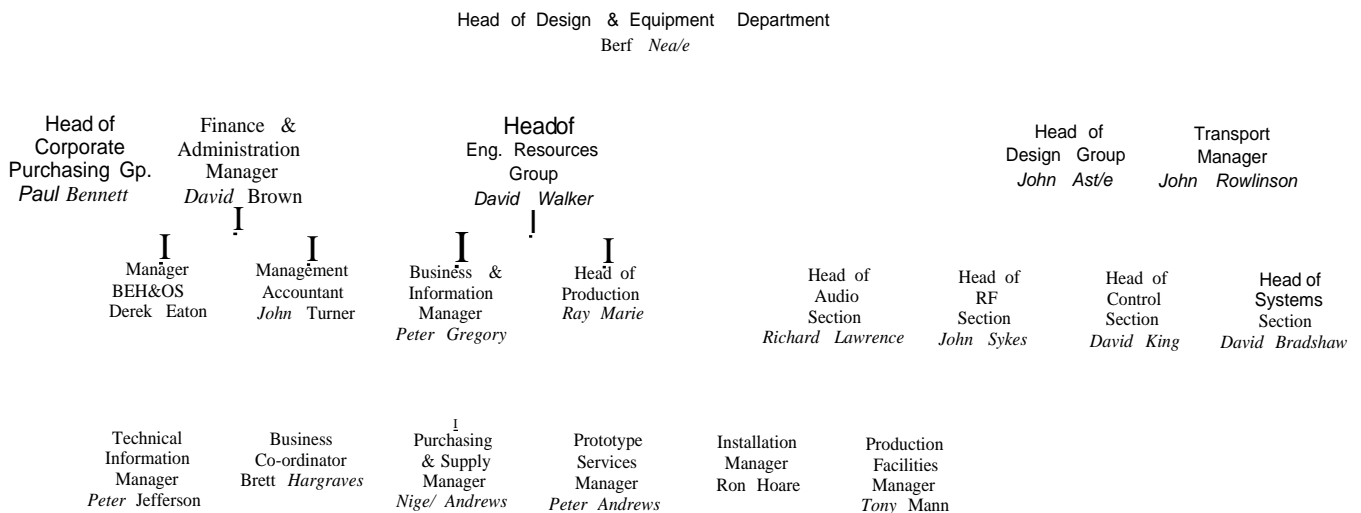
## Research Department and D&ED

In our previous issue we published a diagram showing the new structure of Engineering Management. So here are two more family trees for your collection: Research Department and D&ED.

H.R.D.  
Dr Ian Childs



*Research Department - March 1991*



*Design and Equipment Department - March 1991*