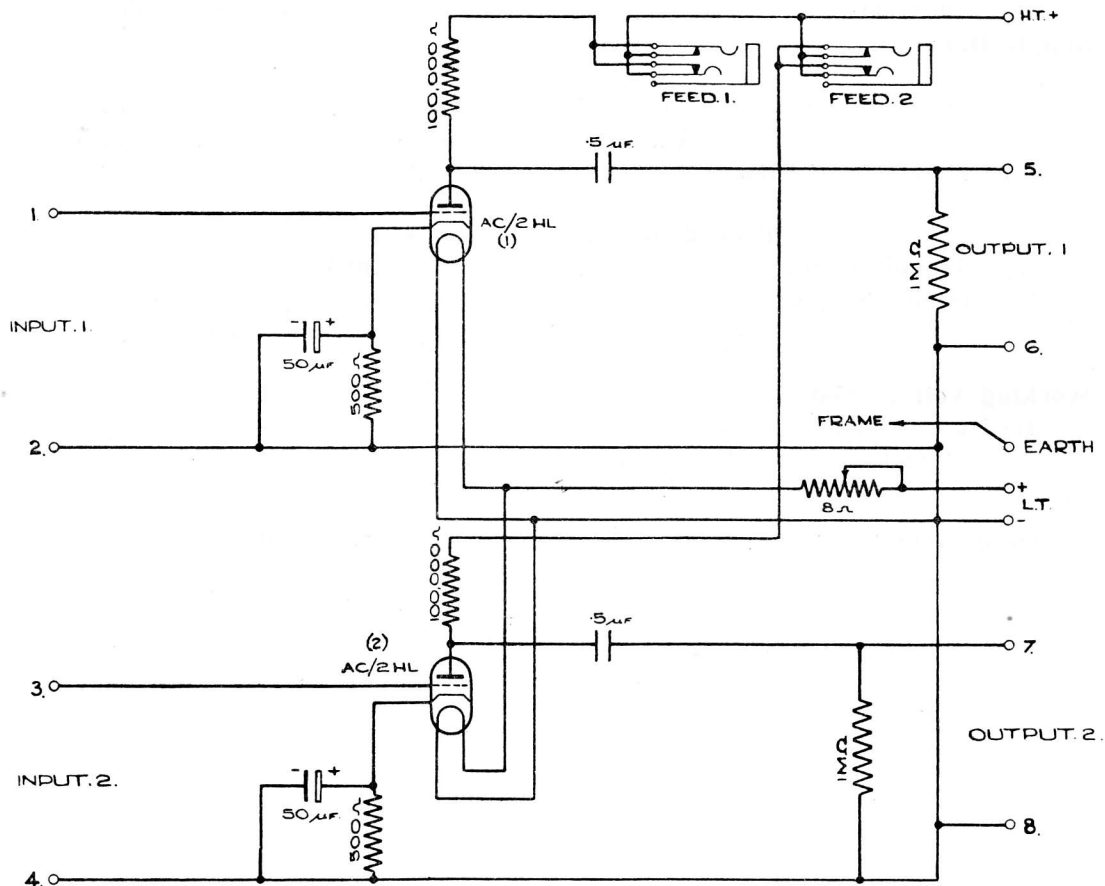


## AMPLIFIER PFL/3



Drawing A.3860, Issue 1

This is a pre-fade listening amplifier and is installed in the gramophone reproducing desks TD/7A at certain stations. It consists of two separate amplifiers with their inputs connected to the outputs of the two gramophones fitted on the desk. Provision is made for connecting headphones via key switching across the output of either amplifier.

### Circuit

The amplifier consists of two independent single-stage amplifiers without either input or output transformers. The grid bias is automatic and jacks are provided for measuring the individual anode currents. No volume control is provided.

# AMPLIFIER PFL/3

Technical Instructions

Item 3 (PFL/3). July, 1938

## Impedances

Input impedance	.. .. .	infinite
Output impedance	.. .. .	(approx) 14,500 ohms
Normal load impedance (1 pr. Ericsson headphones at 1,000 c/s)	.. .. .	(approx) 18,000 ohms

## Supply Data

<i>Stage</i>	<i>Valve</i>	<i>Automatic</i>		<i>Filaments</i>	
		<i>Grid Bias</i>	<i>Anode Current</i>	<i>Volts</i>	<i>Amps</i>
		Volts negative	mA (approx)		
Each stage	AC 2 HL	1	2	4	1
			—		—
		<i>Total</i> (2 stages)	4		2
High Tension Supply	.. .. .	.. .. .	.. .. .	300V	
Low Tension Supply	.. .. .	.. .. .	.. .. .	6V (adjusted to 4V by a series resistance)	

## Working Voltage Gain

Testing Conditions

Output loaded with 18,000Ω and at approximately zero level

Gain at 1,000 c/s. .. .. . **31 ± 2 db.**