

### VIDEO FREQUENCY ATTENUATOR AT3/510

The AT3/510 is designed for use with the Video Switching Matrices MA2M/501 and MA2M/502. The insertion loss is 3.1 dB and a  $\pm 1\%$  resistor is used as a termination. It replaces the EQ1/516A-F when equalisation is not required.

The pad and terminating resistor are mounted on a printed card measuring  $3\frac{1}{4}$  in.  $\times$   $\frac{9}{16}$  in. which is soldered directly to the source input panel of the matrix. The circuit diagram is given in Fig. 1.

#### Reference

1. Designs Department Specification No. 8.350(69).

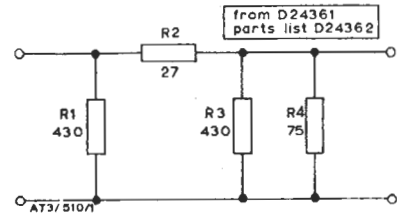


Fig. 1. Circuit of the Video-frequency Attenuator AT3/510

AIB 9/70