

PHASE-SHIFT NETWORK NE1/517

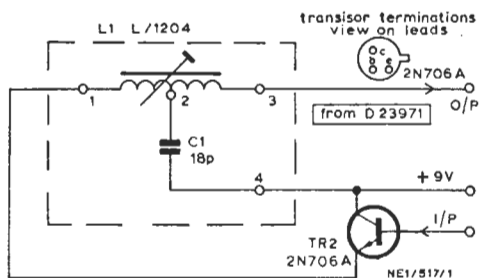


Fig. 1 Circuit of the NE1/517

The NE1/517 forms part of an AM1/508 Cut Fade Amplifier. The network provides adjustable phase shift and so permits the total delay through the amplifier to be accurately set. The delay at 4.43 MHz is $10^\circ \pm 3^\circ$.

The network is constructed on a small fibre-glass board with wire connections and incorporates transistor TR2 from the AM1/508. A circuit diagram is given in Fig. 1.

TES 11/69