

PHASE-SHIFT NETWORK NE1/519

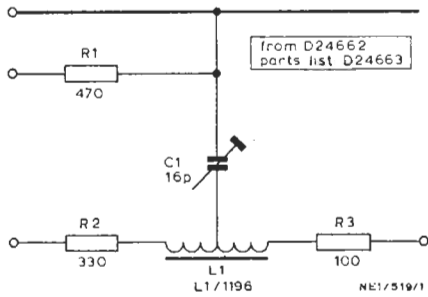


Fig. 1 Circuit of the NE1/519

The NE1/519 is used in UN9/510 Three-channel Switch Units and UN9/509 Single-channel Switch Units. The network provides adjustable phase shift and so facilitates the setting-up and interchanging of the unit in which it is installed. The delay at 4.43 MHz is  $8^\circ \pm 2^\circ$ .

The network is constructed on a small fibre-glass printed-wiring board with wire connections. A circuit diagram is given in Fig. 1.

TES 11/69