

R, G, B AND SYNC SELECTION RELAY PANEL PA17/517

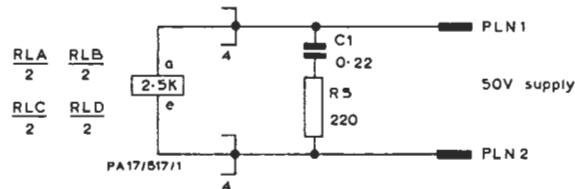
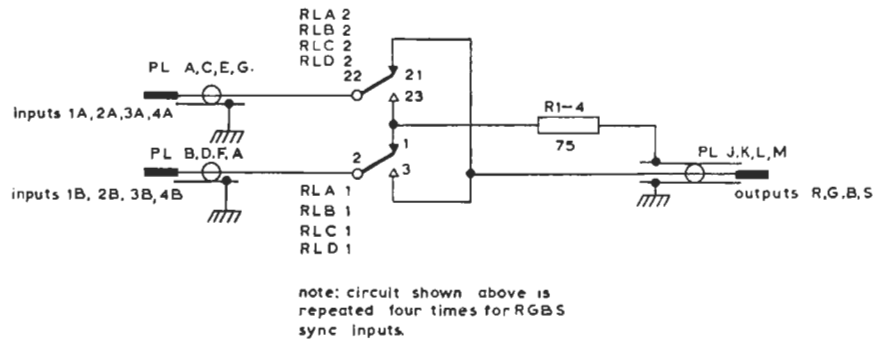


Fig. 1 Circuit of the PA17/517

**Introduction**

This panel accepts two sets of colour-video and synchronising-pulse input signals and selects as output signals the required one of the two. The panel is an aluminium plate carrying the four relays, twelve co-axial connectors and other components; the plate can be mounted on a Chassis Type PN3/23, or four can be accommodated on a Chassis Type PN3/36. A 50-volt relay-operating supply of 100 mA is required.

**Circuit Description**

The circuit of the panel is given in Fig. 1; the four relay coils are connected in parallel, and each

of the four contact circuits is as shown. It is intended that three of the contact circuits shall carry the red, green and blue video signals of a colour television system, and the remaining circuit, the synchronising pulses. Thus a changeover switching action between two signal sources occurs when the relays are operated or released. The signal source not selected is terminated by the 75-ohm resistors R1—R4.

**Reference**

The panel is described in Designs Department Specification No. 8.256 (67).

DEH 6/68