

**POWER SUPPLIER PS2/15**

**Introduction**

The PS2/15 is a stabilised power supplier used in the PS2/16 assembly. Overload and over-voltage protection are not provided and there are no output fuses. The unit is mounted on a chassis type CH1/12B and uses a printed circuit.

**General Specification**

<i>Input Voltage</i>	230V or 240V, 50 Hz
<i>Output</i>	1.75 amperes at 24V ±0.5V
<i>Max Output Current</i>	2.25 amperes
<i>Hum</i>	300mV p-p at full load
<i>Regulation</i>	approx 1V from 100 mA to full load. approx 0.5V at full load for ± 6% change of mains voltage.

**Circuit Description**

The circuit diagram is given in Fig. 1. The base of the series stabiliser TR2 is held at approximately the voltage established by the two series diodes ZD1 and ZD2 in series. TR1 and TR2 together form a Darlington pair giving a low output impedance. C1 provides smoothing. R2 limits the charging current of C1.

**Maintenance**

Routine maintenance is not required.

**Reference**

1. Designs Department Specification No.4.13(64)

AIB 3/71

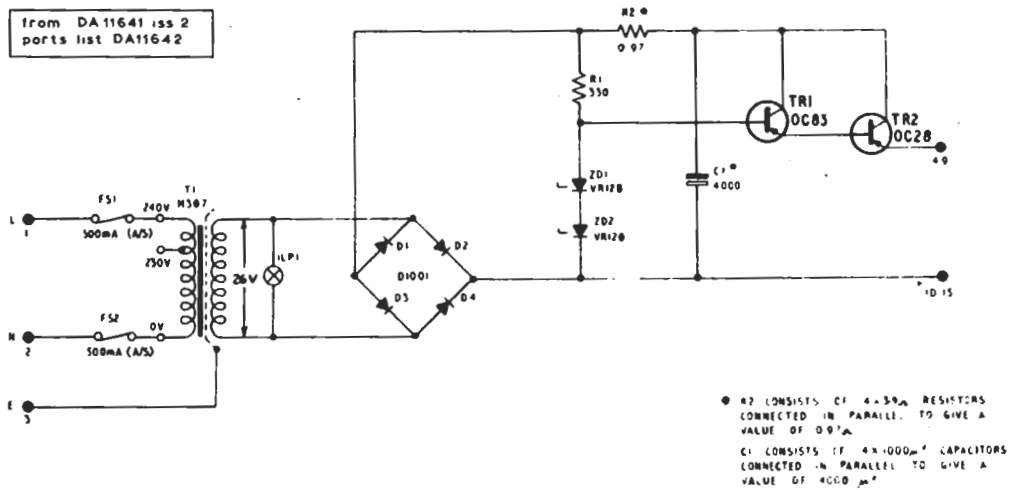


Fig. 1 Circuit of the PS2/15