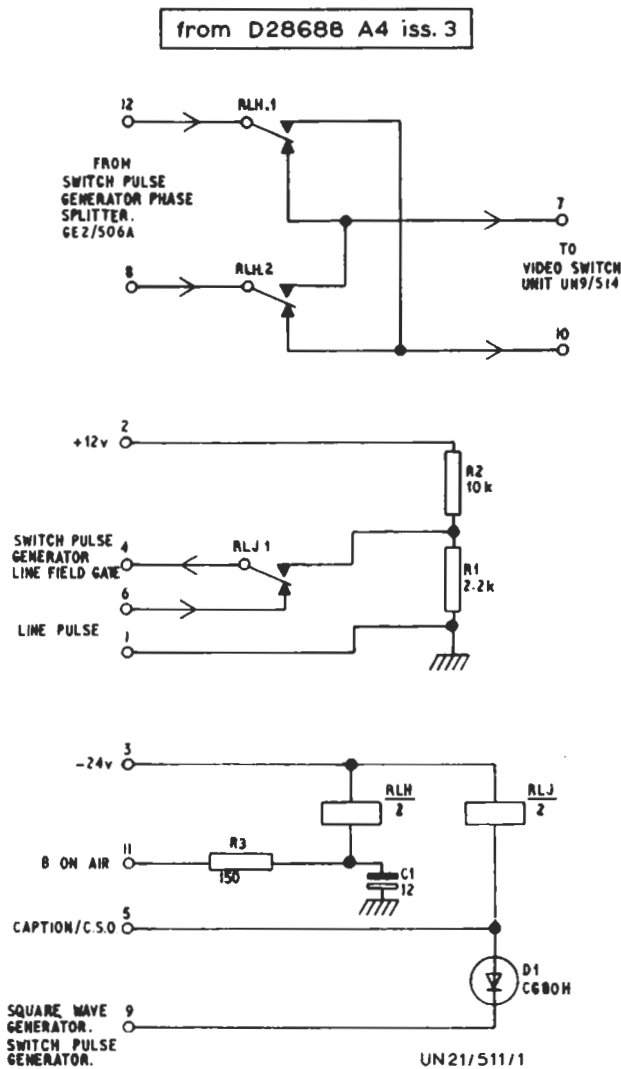


### SWITCH UNIT UN21/511



The UN21/511 is used in O.B. video mixers<sup>1</sup> which have been modified for colour-separation overlay working. The unit consists of two 24-volt relays mounted on a printed-wiring card; it forms an integral part of a split-screen effects unit<sup>2</sup> and carries out certain switching functions for the parent unit.

A circuit diagram is given in Fig. 1. Power supplies at +12 V and -24 V are obtained from the parent unit.

#### References to Typical Associated Equipment

1. O.B. Video Mixer MX1/501A
2. Split-screen Effects Unit UN4/501A

TES 11/71

Fig.1 UN21/511: Circuit Diagram